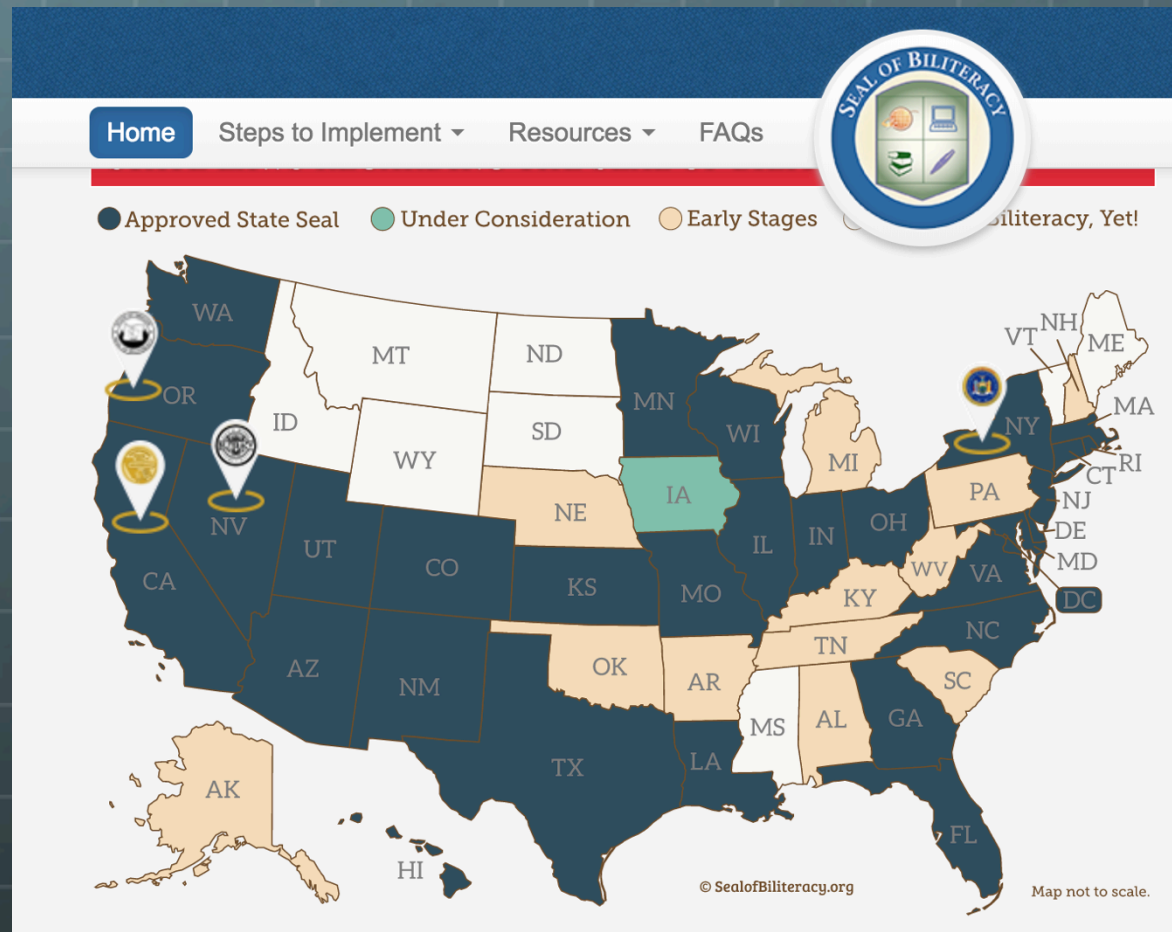


# Seal of Biliteracy Partner Language Tests



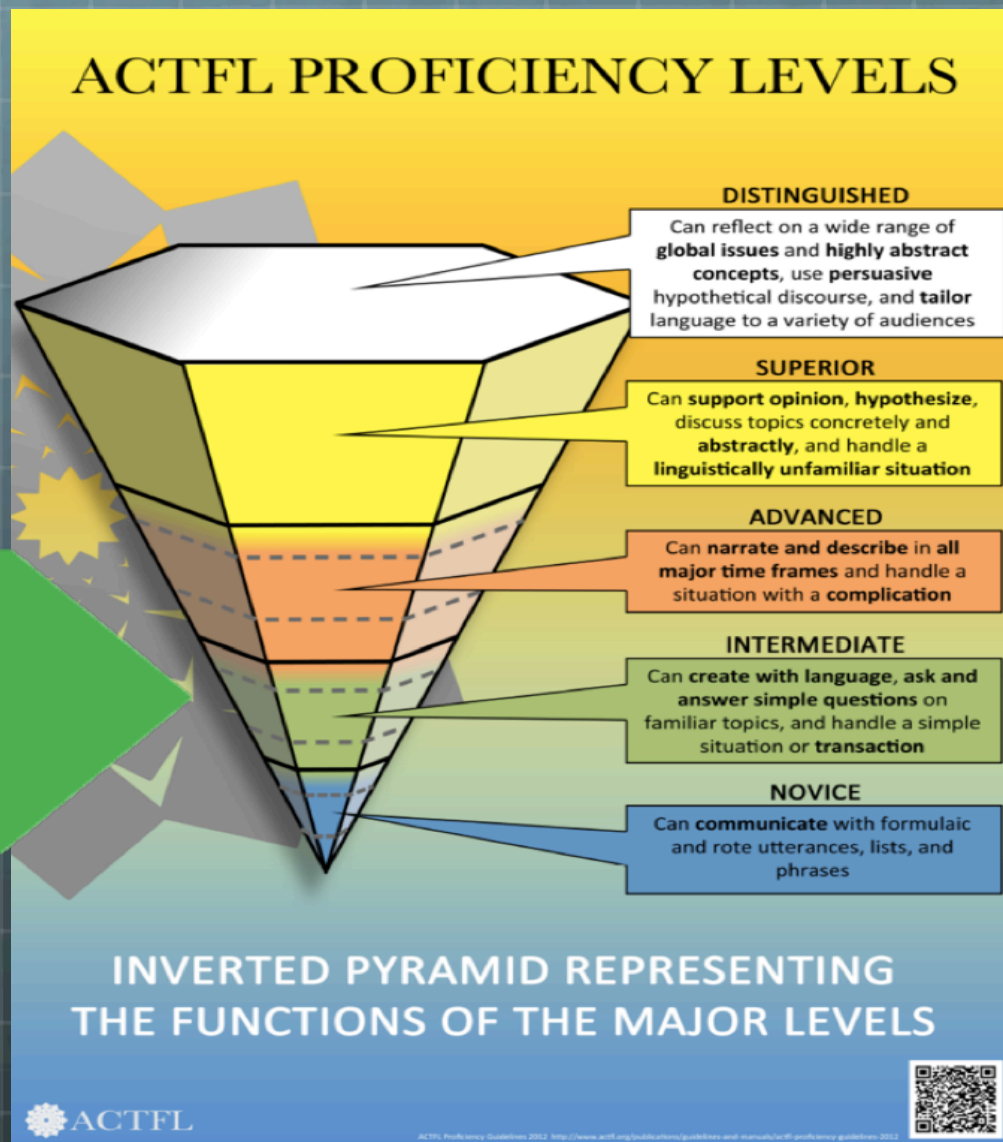
# Guidelines for Implementing the Seal of Biliteracy

- Result of an historic national collaboration between ACTFL, NCSSFL, NABE and TESOL
- Released March 10, 2015
- [https://www.actfl.org/sites/default/files/pdfs/SealofBiliteracyGuidelines\\_0.pdf](https://www.actfl.org/sites/default/files/pdfs/SealofBiliteracyGuidelines_0.pdf)
- Designated a minimum target proficiency level of **Intermediate Mid** based on ACTFL Proficiency Guidelines
- Recommended use Linguafolio



Guidelines for  
Implementing the  
Seal of Biliteracy

# ACTFL Proficiency Guidelines



# Language Opportunity Coalition Determined That:

- Pathway Awards or levels of awards would demonstrate to students and other stakeholders the progressive, lifelong nature of language learning.
  - Biliteracy Attainment Award (Intermediate Low)  
Elementary, middle or high school
  - Silver Seal of Biliteracy Award (Intermediate Mid)  
Middle or high school
  - Gold Seal of Biliteracy Award (Intermediate High)  
High school
  - Platinum Seal of Biliteracy Award (Advanced Low)  
High school, college or graduate school



# Language Opportunity Coalition Determined That:

- The proficiency level is determined by the lowest domain/mode score.
- English and the partner language need to be tested by one of the approved tests.
- The district can add requirements and/or a portfolio to the Seal standard.
- If the partner language has no test, a portfolio can be used.

# Tests to Measure ACTFL Proficiency Level of Partner/World Language

## MOST COMMON:

- Language Testing International:



- AAPPL: ACTFL Assessment of Performance Toward Proficiency in Languages

- Avant Assessment:



- STAMP: STAndards-based Measurement of Proficiency

## OTHER POSSIBILITIES:

- Portfolio: Documentation of proficiency and other criteria
- Other Assessments: Aprenda (Spanish Elem), STAR Reading, SOPA, ALIRA (Latin), SOLOM, DRA, DWA, LAS Links

# Tests to Measure ACTFL Proficiency Level of Partner/World Language

- AAPPL: The logo for Language Testing International (LTI) features the letters 'LTI' in a large, bold, blue font. To the right of 'LTI', the words 'Language Testing International' are stacked vertically in a smaller, blue, sans-serif font. Below 'LTI', the text 'Exclusive Licensee of ACTFL' is written in a very small font.
  - Measures Communication in 3 Modes: Interpretive Reading and Listening, Interpersonal Listening and Speaking and Presentational Writing
  - Languages: Arabic, Chinese, French, German, Korean, Portuguese, Russian, Spanish and ESL (Hindi, Italian and Japanese coming soon)
- STAMP: The logo for Avant features the word 'Avant' in a blue, sans-serif font. Above the 'a' is a stylized graphic of a blue arc with a small orange dot at its peak, resembling a rising sun or a stylized 'A'.
  - Measures Communication in 4 Skills: Reading, Writing, Listening and Speaking
  - Arabic, English, French, German, Hebrew, Hindi, Italian, Japanese, Mandarin, Russian, Spanish (Korean and Polish coming soon)
  - Now offers professional development



# Proficiency Level of Partner/World Language

|               | Biliteracy Attainment Award | Silver Seal of Biliteracy | Gold Seal of Biliteracy | Platinum Seal of Biliteracy |
|---------------|-----------------------------|---------------------------|-------------------------|-----------------------------|
| Award Level   | Intermediate Low            | Intermediate Mid          | Intermediate High       | Advanced Low                |
| AP            | N/A                         | 3                         | 4                       | 5                           |
| AAPPL         | I-1                         | I-2 - I-3 - I-4           | I-5                     | A                           |
| ALIRA (LATIN) | I-1                         | I-2 - I-3 - I-4           | I-5                     | A                           |
| STAMP         | Level 4                     | Level 5                   | Level 6                 | Level 7                     |



# Tests to Measure ACTFL Proficiency Level of Partner/World Language

## DEMOS:

- AAPPL: 
  - <https://www.actfl.org/assessment-professional-development/assessments-the-actfl-testing-office/aappl/demo>
- STAMP: 
  - <https://stamp4s.avantassessment.com/avant/do/samplelogin>

# Both AAPPL and STAMP Tests:

- Are predictive (listening and reading happen before speaking and writing to get progressively harder)
- Are task- and performance-based
- Have rubrics available on line
- Let you see the student work (AAPPL for 6 months and STAMP forever) to analyze and make programmatic decisions

# STAMP: Sample Reading Task

## Sample Reading Item – Novice Level

### Situation

You found this card on the sidewalk in Guadalajara.



**Permiso de Conducir**  
**Número: 990173601542**

**Fecha de expedición:** 18 de abril de 2006

**Expedido en Manzanillo, Colima, Mexico**

**Apellido:** García  
**Nombre:** Juan  
**Domicilio:**  
25 Sur 2902 Colonia Las Fuentes  
Guadalajara, Jalisco, México

**Fecha y lugar de nacimiento:**  
20 de agosto de 1986,  
Morelia, Michoacan, México

Where was this person born?

- ☐ Guadalajara
- ☐ Colima
- ☐ Manzanillo
- ☐ Morelia

# STAMP: Sample Writing Task



## Sample Writing Item

You just received an email from your friend. He wrote about his week-end and the things that he and his friends did on Saturday. He finished his email asking you about the typical things that you and your friends do on the week-end. Describe two of your favorite activities you do with your friends and family and why you enjoy them so much. Write using complete sentences and remember that the more sentences you use, the more likely you are to receive a higher score. Be sure to write in Spanish.



Play



Pause

Please fill in your answer below:

Written responses are automatically saved.

Next

á é í ó ú ñ ü ç ì

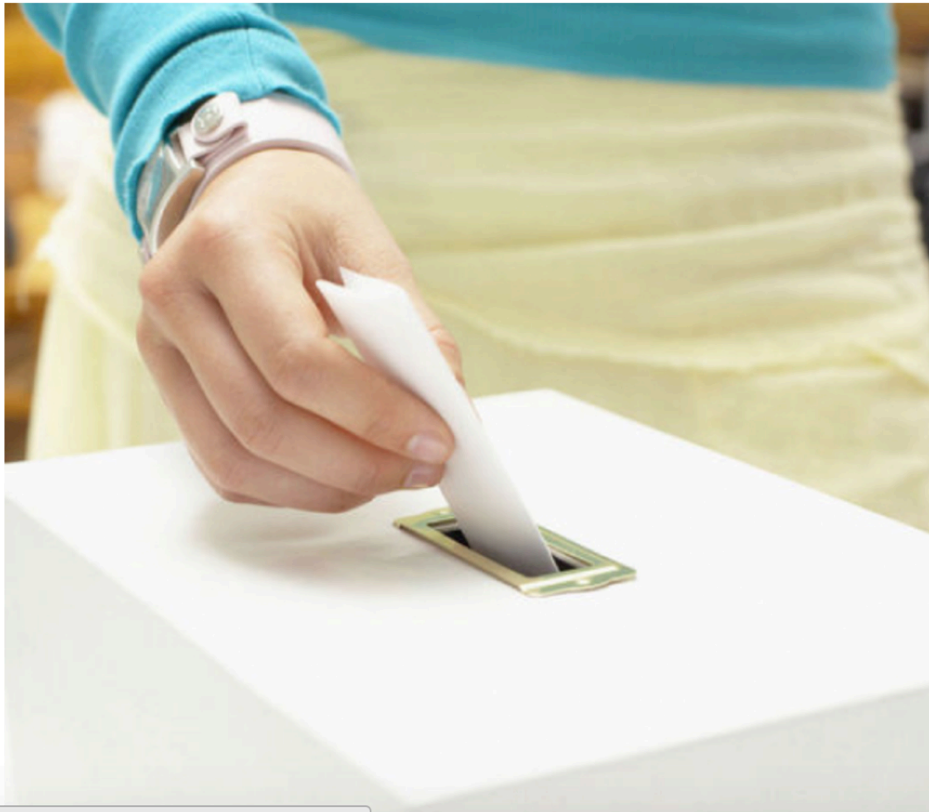


# STAMP: Sample Listening Task

## Sample Listening Item – Intermediate Level

### Situation

You hear the following announcement on the radio.



What does the announcement say?

- ☐ New voting regulations will take effect in June.
- ☐ Local elections have been postponed until next month.
- ☐ Volunteers are needed to monitor local elections.
- ☐ Expired cards must be renewed in order to vote.

# STAMP: Sample Speaking Task

## Sample Speaking Item

You just met the new exchange student at your school. She wants to know about your friends. Tell about one or more of your friends. Include such information as their names, ages, where they live, and what they like to do for fun. Be as detailed as possible and say as much as you can. Be sure to speak in Spanish using complete sentences and remember that the more sentences you use, the more likely you are to receive a higher score.




# AAPPL: Sample Interpretive Listening Task

## Spanish Interpretive Listening

Step 2 of 8

Mark the picture that represents the job for the day of the week by dragging and dropping the red chip to the right square on the paper.



Say Again?

Jobs Schedule

|  | Monday | Tuesday | Wednesday | Thursday | Friday    |
|--|--------|---------|-----------|----------|-----------|
|  |        |         |           |          | NO SCHOOL |
|  |        |         |           |          | NO SCHOOL |
|  |        |         |           |          | NO SCHOOL |
|  |        |         |           |          | NO SCHOOL |
|  |        |         |           |          | NO SCHOOL |
|  |        |         |           |          | NO SCHOOL |

# AAPPL: Sample Interpretive Reading Task

## Spanish Interpretive Reading

Step 3 of 8

Read the description of certain foods and select the picture that describes them.

RESET

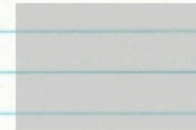
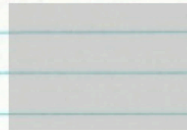
### Food Flashcards

SKIP

SAVE



Se sirve el pan con todas las comidas. No usan mantequilla con pan.



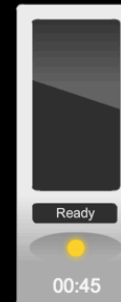
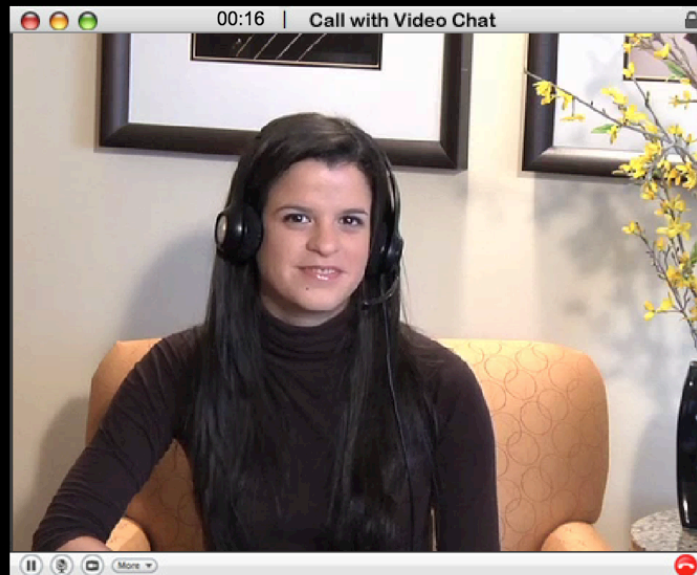


# AAPPL: Sample Interpersonal Listening and Speaking Task

## Spanish Interpersonal Listening and Speaking

Step 2 of 8

Answer the person out loud.



CONTINUE

Say Again?

# AAPPL: Sample Presentational Writing Task

## Spanish Presentational Writing

⌚ Step 2 of 8

Greet the student and list some of the things needed.

http://scoolbook.net/messages/compose

scoolbook.net Search Home | Settings

New Message

To: student10309@email.com

Subject: What to bring to school

Message: **B** *I* U abc

Cancel Submit

# Considerations:

- Its better to choose a test and stick with it since you'll be comparing scores from year to year
- You need to teach kids to say/write as much as they can, elaborate and expand on their ideas to maximize their proficiency
- Students should be working with task-based activities and be learning how to perform

# Needed for Both AAPPL and STAMP:

- Register as a school to get login and password codes for student tests.
- Computer needs to pass system check and have mic and headphones.



# Questions?

